

Wireless Modem Quick Start


1. Modem Setup

Insert the SIM Card into the Modem's SIM Card Slot
Inset Modem into the Laptop or PC

2. Software Installation

After a few moments, the laptop or PC should automatically detect and install the Software.
(Notes: If the laptop or PC cannot auto-play, please double-click "My Computer", and then



double-click  to install the software. Or right-click it to open it, then click "AutoRun.exe" or "Install.exe" or "Setup.exe" to install the software.

Be patient when installing, selecting according to the indications. This process should take a few minutes. When the Figure (1) pop-up screen, please click "Continue Anyway" to go on till "Finish".

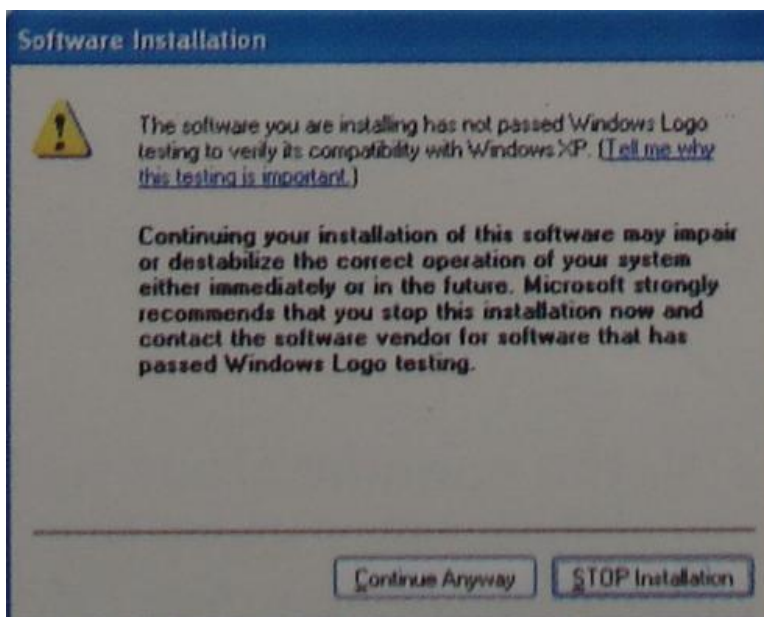




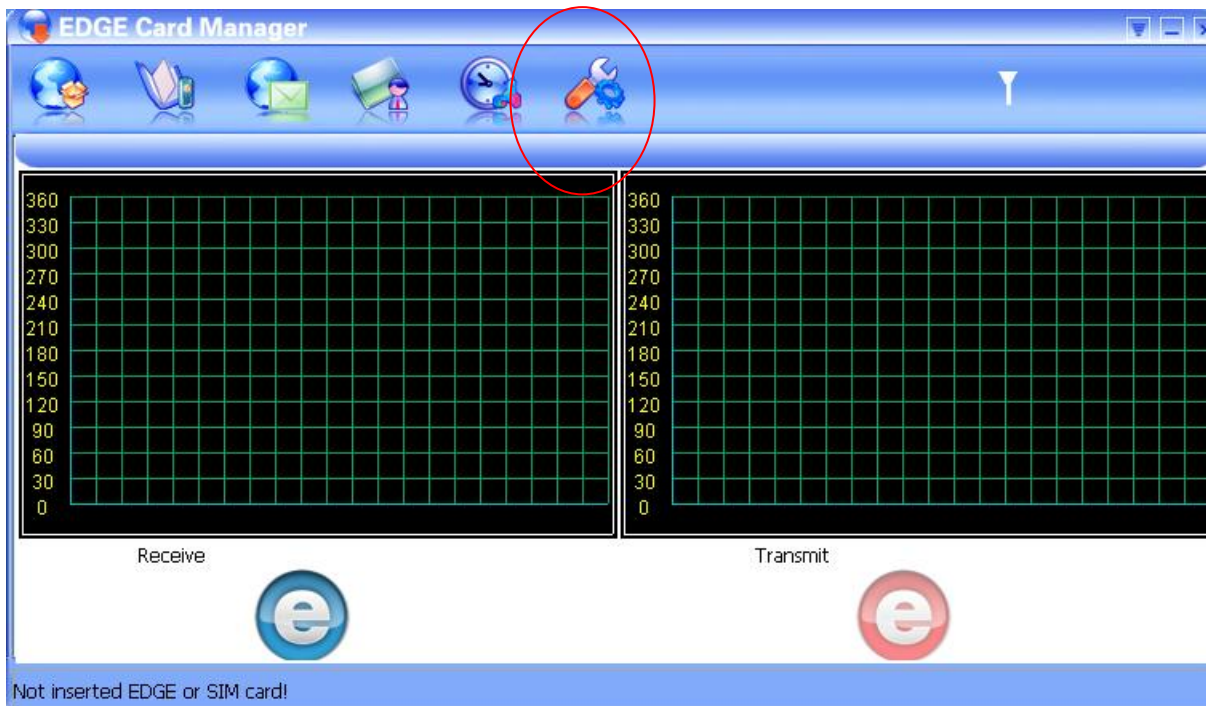
Figure (1)



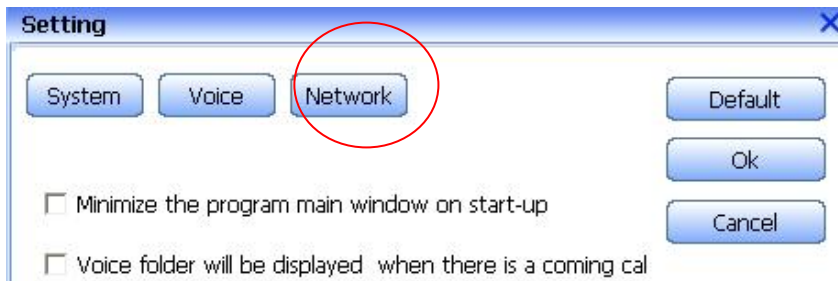
A new icon  will appear on the computer desktop.

3. Internet Connection

Double-click on the icon  and then click  (Setting Button)



Select “Connection Setting”, then “Network”, it will pop-up menu as Figure 2.



(Figure 2)



Click “New” to add new APN, it will pop-up Figure 3.

A screenshot of a 'Dial Info' dialog box. The dialog has a title bar with 'Dial Info' and a close button. Inside, there is a section titled 'APN' containing four text input fields: 'User Name:', 'Password:', 'Phone:', and 'Connect Point:'. Below these fields is an 'Advanced' button. At the bottom of the dialog are 'OK' and 'Cancel' buttons.

Figure (3)

Now please fill in the APN Table. All the parameters are from your network provider.
For example: China Mobile Phone Carrier.

User Name: wap

Password: wap

Phone: *99#

Connect Point: cmnet

After filling the parameters, click “OK Button” to save it.

4. Dial up to internet

Select the “Connect Point” from your setting list and click “OK Button” in Figure (4)

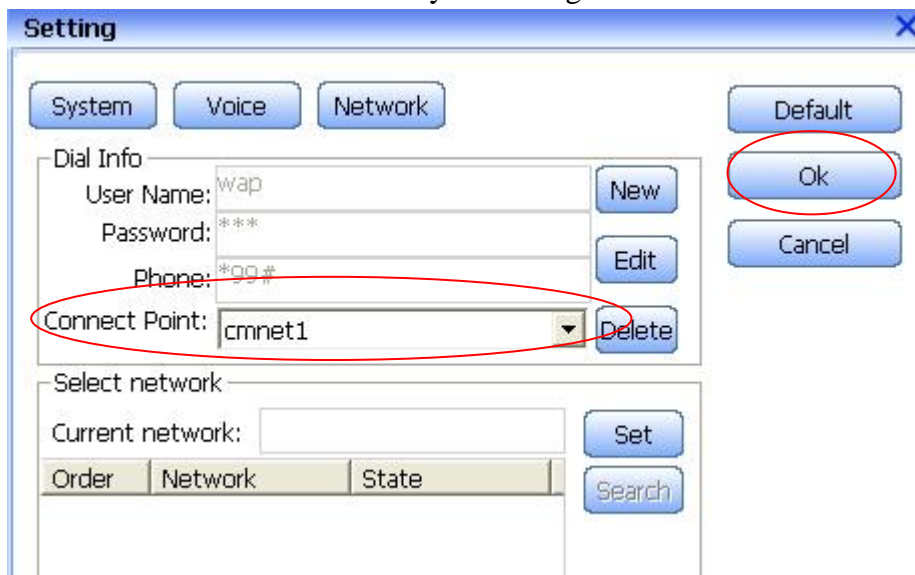


Figure (4)

Click “Connect Button” to dialup to the internet. If you want to disconnect from internet, please click “Disconnect Button” in Figure (5)

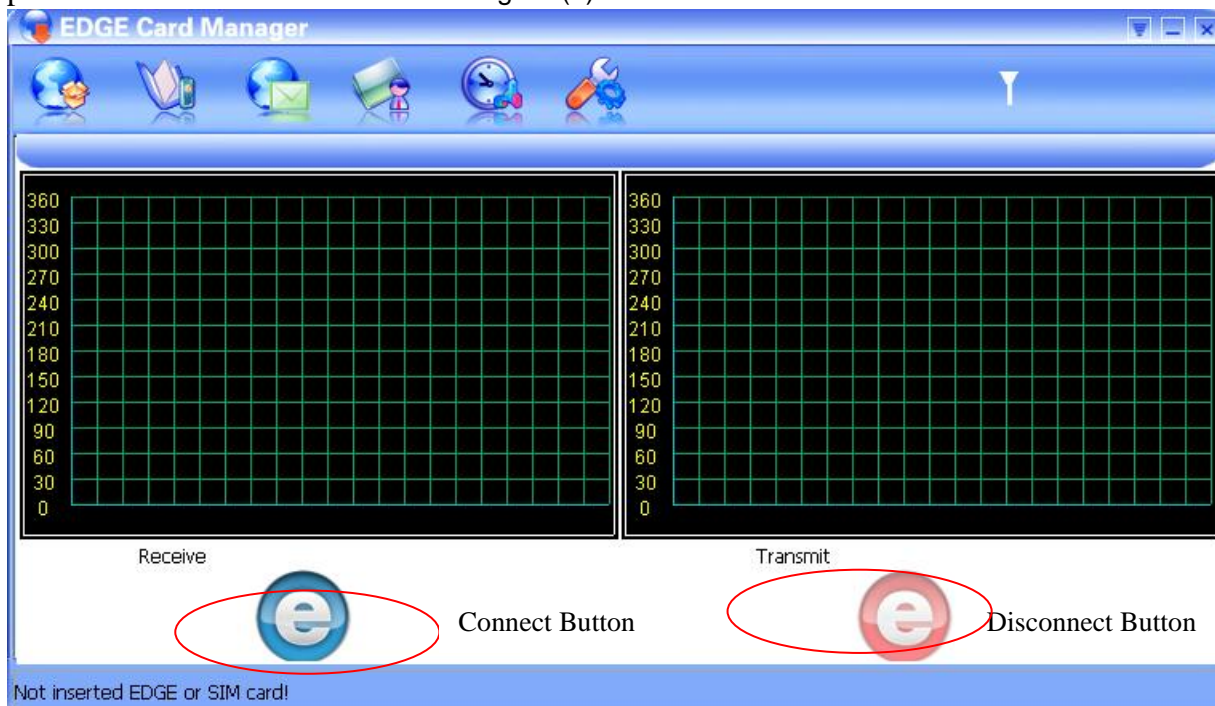


Figure (5)