

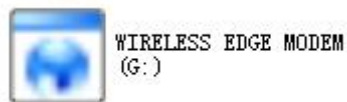
# Wireless Modem Quick Start


## 1. Modem Setup

Insert the SIM Card into the Modem's SIM Card Slot  
Inset Modem into the Laptop or PC

## 2. Software Installation

After a few moments, the laptop or PC should automatically detect and install the Software.  
(Notes: If the laptop or PC cannot auto-play, please insert the Driver CD into the CD/DVD



Driver, double-click  to enter the Driver Directories, then



double-click `AutoRun.exe` to install the software. Or right-click it to open it, then click “AutoInstall.exe” or “Install.exe” or “Setup.exe” to install the software.

Be patient when installing, selecting according to the indications. This process should take a few minutes. When the Figure (1) pop-up screen, please click “Continue Anyway” to go on till “Finish”.

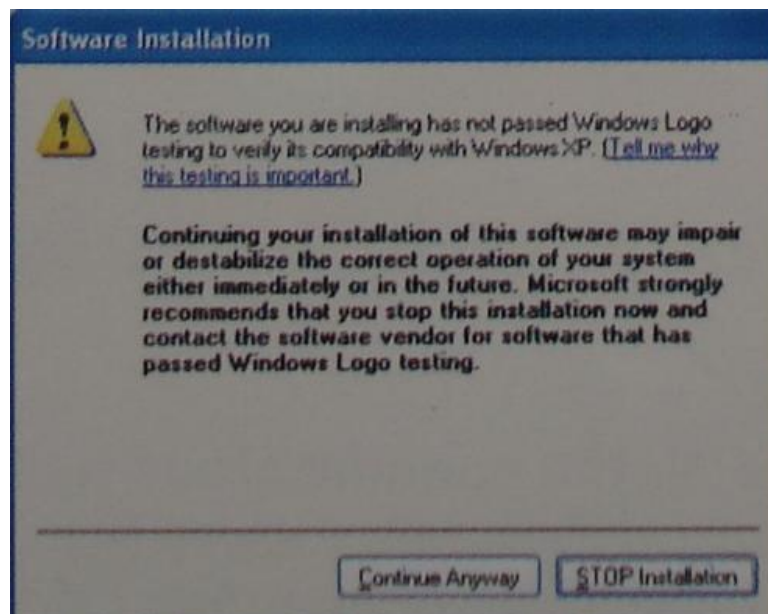
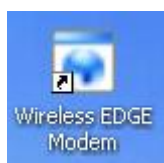
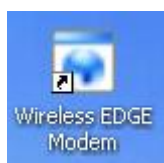


Figure (1)



A new icon  will appear on the computer desktop.

### 3. Internet Connection



Double-click on the icon and then click “Setting Button”



(Setting Button),

Select “Connection Profile...”, it will pop-up menu as Figure 2.

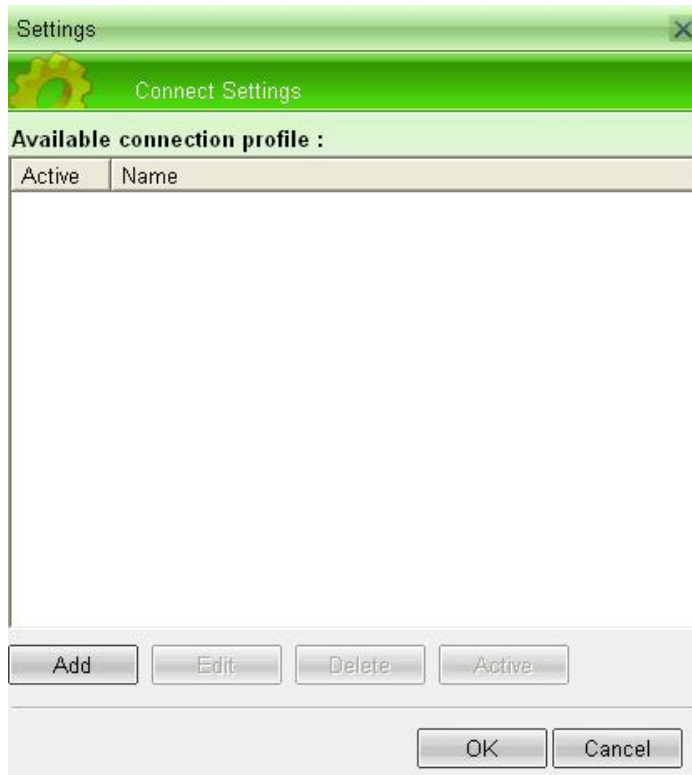


Figure 2

Click “Add” to add new APN, it will pop-up Figure 3.

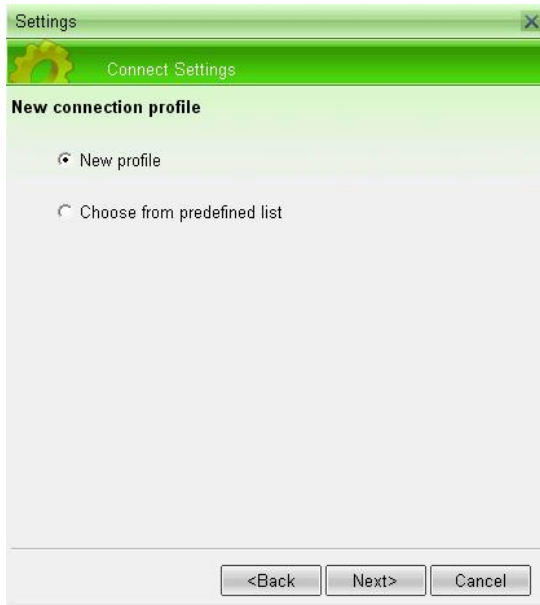


Figure 3

Now you have two options:

- A. New profile --- select this to create APN manually
- B. Choose from predefined list

If select “New profile”, it will pop-up the following Figure 4.

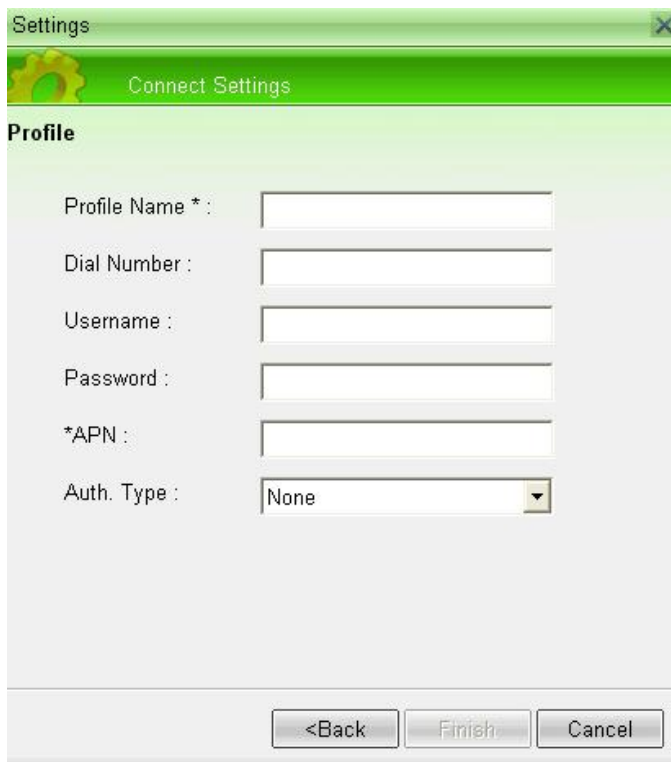


Figure 4

Please fill in the information parameter (This information parameter is from Network Provider), and save it.

If select “Choose from predefined list”, please select the existed APN setting.

After APN setting is finished, double-click on the icon like following marked in red circle.



Notes: The manufacture reserves right to change or improve the information and specification without notice!

Attached figures: How to inset SIM Card in right way.



Note: The manufacturer reserves right to change or improve the information and specification without notice!