

Wireless Modem Quick Start

1. Modem Setup

Insert the SIM Card into the Modem's SIM Card Slot
Inset Modem into the Laptop or PC

2. Software Installation

After a few moments, the laptop or PC should automatically detect and install the Software.
(Notes: If the laptop or PC cannot auto-play, please double-click "My Computer", and then



double-click to install the software. Or right-click it to open it, then click "AutoInstall.exe" or "Install.exe" or "Setup.exe" to install the software.

Be patient when installing, selecting according to the indications. This process should take a few minutes. When the Figure (1) pop-up screen, please click "Continue Anyway" to go on till "Finish".

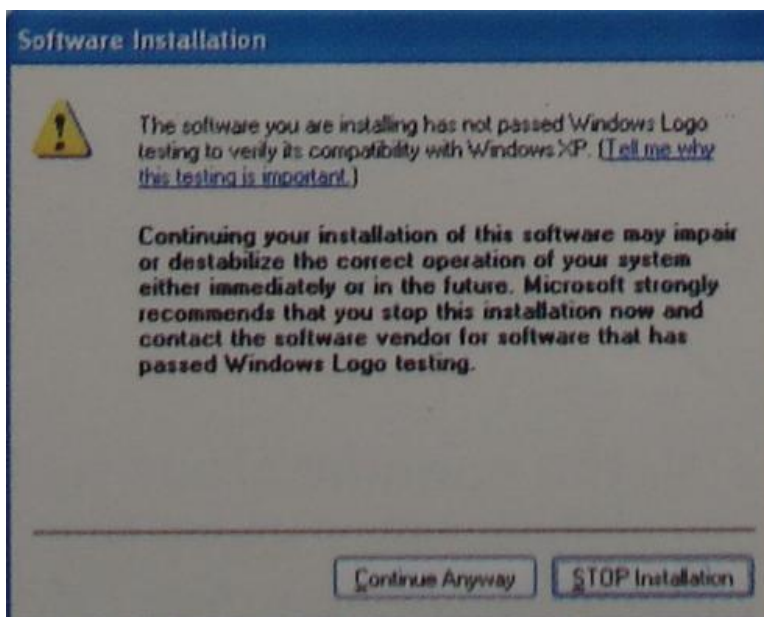


Figure (1)

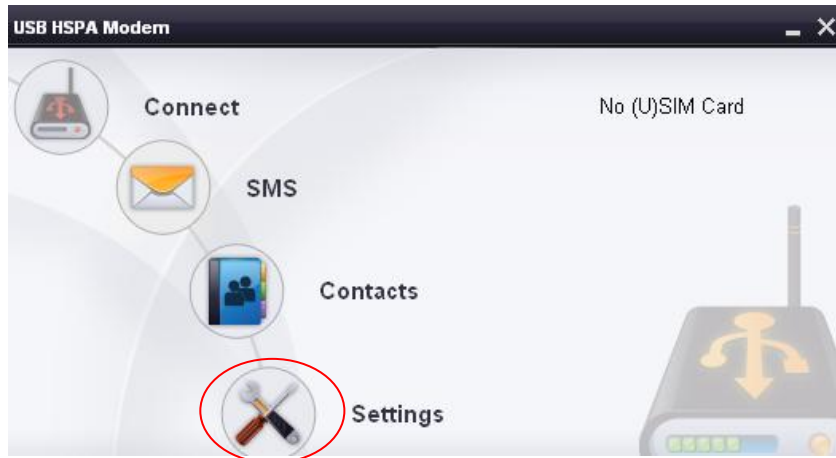


A new icon will appear on the computer desktop.

3. Internet Connection

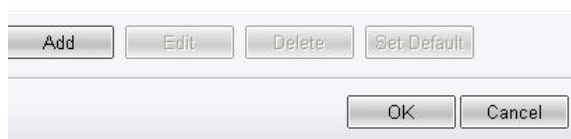
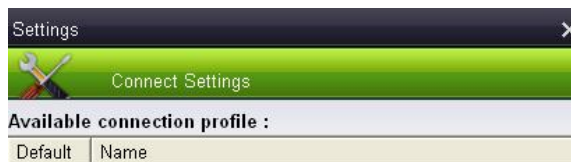


Double-click on the icon and then click “Setting Button”



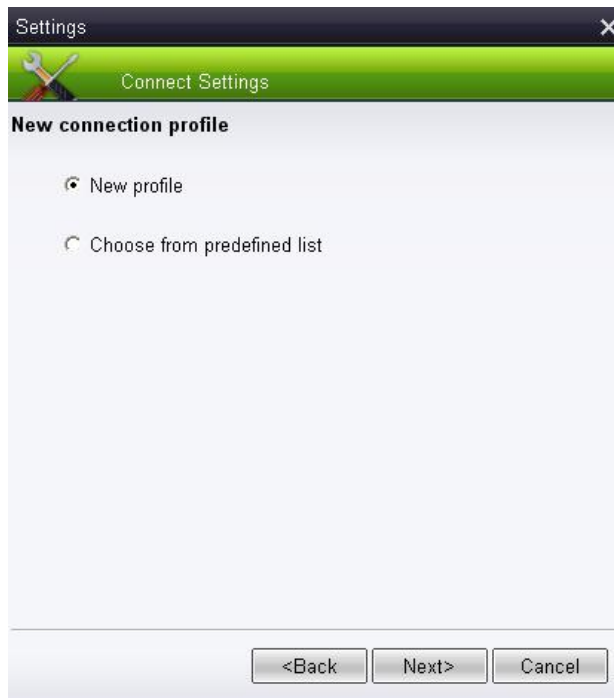
(Setting Button),

Select “Connection Profile...”, it will pop-up menu as Figure 2.



(Figure 2)

Click “Add” to add new APN, it will pop-up Figure 3.

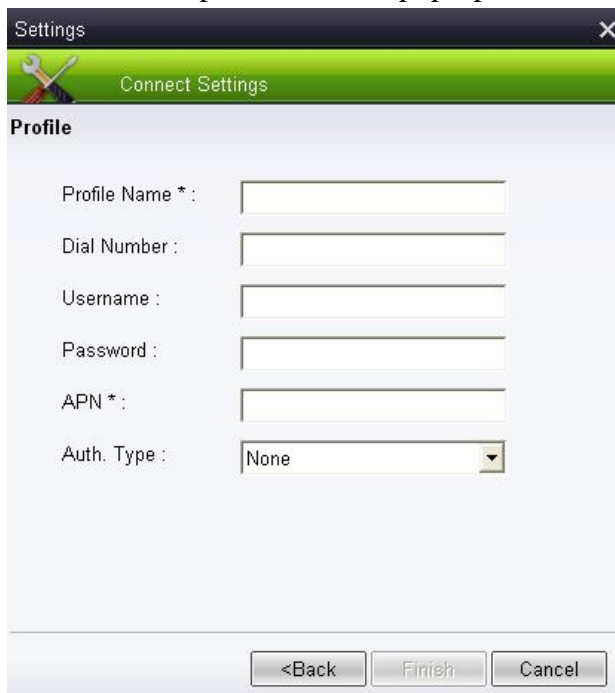


(Figure 3)

Now you have two options:

- A. New profile --- select this to create APN manually
- B. Choose from predefined list

If select “New profile”, it will pop-up the following Figure 4.

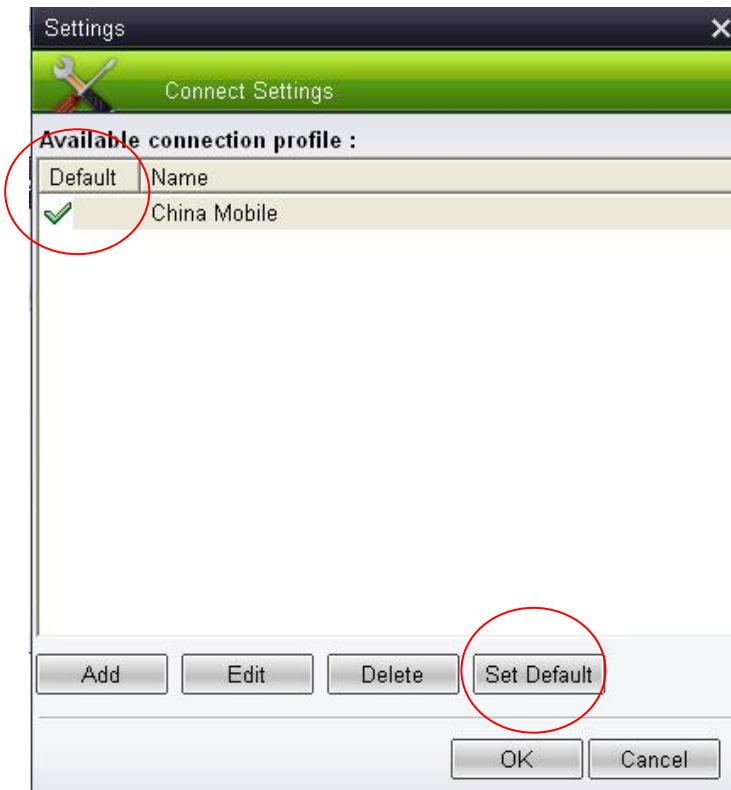


(Figure 4)

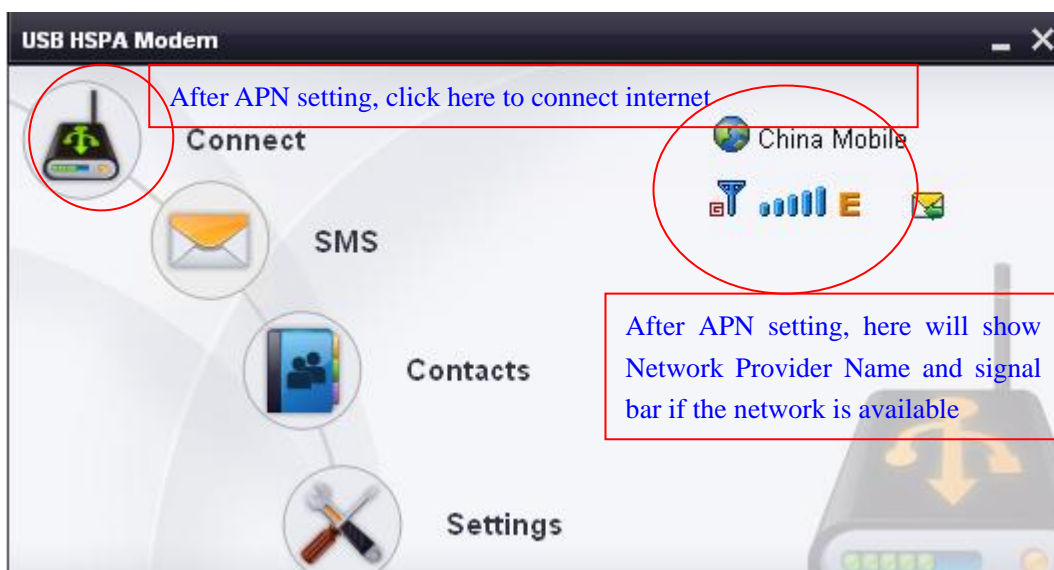
Please fill in the information parameter (This information parameter is from Network Provider), and save it.

If select “Choose from predefined list”, please select the existed APN setting.

After APN setting is finished, please “Set Default” the Connection Profile Name. Then there will be a click marked. Click “OK” to save parameter.



Double-click on the icon like following marked in red circle to connect the network.



Notes: The manufacture reserves right to change or improve the information and specification without notice!