

H900 Series Dual SIM Router Datasheet



>>| Product Introduction

The H900 series Cellular Router designed for establish a GSM/WCDMA 3G network and share a cellular broad band Internet connection. The H900 series Cellular Router enables users to quickly create a secure network and provide access to the Internet using a cellular network.

E-Lins' mobile data products are widely used in more than 50 countries and regions, and more than twenty industrial fields, such as power control, water schedule, traffic, oil field, weather forecast, environmental protection, street lamp control, post, bank and many other areas.

>>| Hot Spot

Broadband M2M communications

Dual sim card backup, four mode (SIM1 only, SIM2 only, Main SIM backup, Mutual SIM backup)
SIM failover/standby APN

3G failover for fixed line broadband connections

Rapid service deployment applications

DB9 port for RS232/RS485/TTL to Cellular Gateway

External antenna SMA socket

VPN (PPTP, IPSec, L2TP, GRE supported)

Support multi-LAN IP address (VLAN feature)

Always be online. Dynamic fresh network link to protect "fake link".

Auto-dial feature, keep alive link

Built-in watch dog

>>| Brief

Broadband M2M Communications

E-Lins Technology Co., Limited

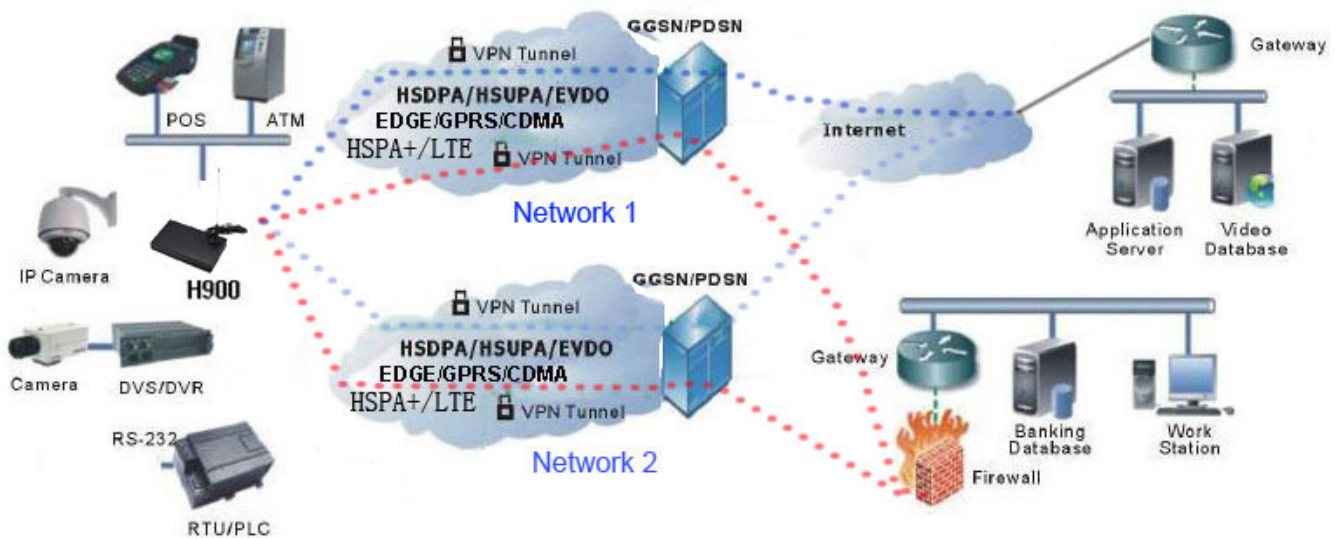
Add: 2~3rd Floor, Haisong Building, Tairan Road 9th, Chegongmiao, Shennan road, ShenZhen, 518040, China

Tel: +86-755-83213156 E-mail: sales@szelins.com www.szelins.com

The product line provides a cost-effective broadband Machine-to-Machine (M2M) solution and supports the following radio access technologies: HSDPA, HSUPA UMTS, EDGE, GPRS and GSM.

The compact and rugged structure makes it a suitable product for deployments in M2M applications such as CCTV, ATM, telemetry, SCADA, retail (POS), digital signage, and intelligent traffic systems.

>>| Typical Topology



>>| Industrial Application

- Remote Data Monitor and Control
- CCTV, security surveillance
- Water, gas and oil flow metering and schedule
- AMR (automatic meter reading)
- Power station monitoring and control
- Remote POS (point of sale) terminals, ATM,
- Traffic signals monitor and control, Traffic info guidance
- Oil field, weather forecast, environmental protection, street lamp monitoring and control
- Early Warning of Mountain Torrent
- Fleet management
- Power distribution network supervision
- Central heating system supervision
- Weather station data transmission

- Hydrologic data acquisition
- Vending machine
- Telemetry, SCADA
- Vehicle logistics and diagnostics controlling
- Parking meter and Taxi Monitor
- Telecom equipment supervision (Mobile base station, microwave or optical relay station)

>>| Basic Features

- Supports multi-band GSM, GPRS, EDGE, HSDPA, HSUPA network, and CDMA1x, EVDO networks
- SMA Standard antenna
- Optimized EMC design
- Always on line: On-line detection and automatic redial and keep-alive while the line dropped
- Wide range power input
- Smart power management
- Reliable, flexible, easy to use and management
- RS-232/485 interface transparent communication (DTU modem function)
- 5 LAN RJ45 ports for Ethernet interface
- Dual SIM supported, swift freely and backup each other.

>>| Enhanced Features

- Real-time clock
- VPN (PPTP, L2TP, IPSec, GRE)
- Built-in DHCP server
- Supports NAT and DMZ host
- Supports DNS proxy and Dynamic DNS (DDNS)
- Supports Static routing table
- Supports packet filter
- Built-in multi-routing backup (Ethernet and dialup network)
- System and network monitoring
- WAN interface traffic statistics
- Support multiple protocol conversion
- Transparent data transmission (DTU feature)
- WEB/Telnet/console management interface
- Support radio network data envelope counting
- Self-diagnostic and alarm output
- Local/remote profiles backup and retrieve
- Local/remote firmware upgrade via web
- Remote web management
- Urgent event alarm via SMS optional
- Firewall, packet filtering

- Support data center communication
- Support NTP
- Support LED status indication
- Support VLAN
- Support LCP, ICMP check

>>| Enhanced Features

- Multi-level link detection and redial, keep the traffic channel alive
 1. PPP detection
 2. Local and remote ICMP detection
 3. Heart-beat detection
 4. WAN interface traffic detection

- On/off line control
 1. Auto or manual dial
 2. Timing on/off line control

- Flexible data communication
 1. Supports layer 2 and 3 data communication
 2. Supports RS-232 transparent communication:
UDP/IP or TCP/IP Client/Server
 3. Supports both RS-232 and Ethernet communication

- Configuration and remote management
 1. Multi-language web based configuration interface (local or remote)
 2. Supports Telnet local or remote operation
 3. CLI operation

- Virtual online technology (VKL, only CDMA)
 1. Release wireless network channel while there is no user's data traffic
 2. Keep the router online logically when the wireless channel released
 3. The router will immediately restore to the connected status without any redial or authentication if there is any data transmitted

>>| Specification

Wireless	
Compatible Mobile Networks	<ul style="list-style-type: none">• UMTS WCDMA (HSUPA/HSDPA)• GSM EDGE• GSM GPRS

	<ul style="list-style-type: none"> • CDMA1x • CDMA EVDO Rev 0 and Rev A
Cellular Frequency	<ul style="list-style-type: none"> • UMTS/HSPA/HSUPA (WCDMA/FDD) 850/1900/2100 MHz or 850/900/1900/2100Mhz • Quad-band EGSM 850/900/1800/1900 • CDMA1x/EVDO: 800/1900Mhz or 450Mhz optional
Bandwidth	<ul style="list-style-type: none"> • HSUPA Downlink 14.4 Mbps Uplink 5.76Mbps • HSDPA Downlink 7.2 Mbps Uplink 384k bps • WCDMA/UMTS Downlink/Uplink 384 kbps • EDGE Downlink 236,8 kbps Uplink 118 kbps • GPRS Downlink 85.6 kbps Uplink 42.8 kbps • CDMA1x Downlink/Uplink 153.6kbps • CDMA EVDO Rev A: 3.1Mbps downlink, 2.4Mbps uplink Rev O: 2.4Mbps downlink, 153.6kbps uplink
Wi-Fi	No WiFi
Protocol	
Protocol support	TCP, UDP, SMTP, POP, ICMP, FTP, PPP, PPPoE, DHCP, DDNS, DNS, WPS, DMZ, Syslog, NAT, xDSL, NTP, QoS, support firmware update, ALG, (Rip, OSPF, Ripv2 optional)
USB Host	No
DTU (Serial to Cellular Gateway)	With DTU feature (optional), RS232 or RS485 option DB9 port
SNMP	Yes
VPN	PPTP, L2TP, IPsec, GRE

Security	
Security	support 64/128 bits WEP, 802.1x, WPA, and WPA2 support WDS support WPA1/2 – PSK support WPA1/2 – 802.1x support EAP – TLS, TTLS, LEAP, PEAP support access with user name & password. support access control base WAN/LAN interface support access control base source IP address defense DOS attack, support SYN flooding, IP surfing, ping of Death, fragile, teardrop, land etc. support PAP & CHAP support IP filtering
Advanced Firewall Features	Network Address Translation (NAT) Stateful Packet Inspection (SPI) VPN Pass-through
Media Access Control	CSMA/CA with ACK
Certifications	REDIUS Client
Interface	
LAN	5X 10/100M LAN port (RJ45 interface)
Antenna	1X antenna for Cellular (50Ω SMA female interface)
Led	<ul style="list-style-type: none"> • Power • RUN • LAN (10/100M) 1-5 • NET • RF
Button	Reset
Console DB9 port	1 console port (also can be used as M2M port)
Serial port / DB9	rate: 300~115200bps
Configuration interface	Web/Telnet or RS-232
UIM/SIM	1.8V/3V, two sim card slot

Power	
Power supply	DC5V-26V , typical DC12V1A, 12v CAR USE
Power consumption	<ul style="list-style-type: none"> • Idle: 40mA@12VDC • Max: 400mA@12VDC • Average:250mA@12VDC
Software	
Device Management	<ul style="list-style-type: none"> • WEB interface (Internet Explorer v6 or Later; Mozilla Firefox v1.5 or Later, or other Java-enabled Browsers)
Minimum System Requirements	Mobile Internet Access Subscription and Internet PC Adapter Computer with: <ul style="list-style-type: none"> • Windows 7, Vista , Windows XP SP2, Windows 2000 SP4, or Mac OS® X (v10.4/v10.3), Linux • Internet Explorer 6 or Mozilla Firefox • CD-ROM Drive • Network Interface Card
Physical	
Operating Temperature	<ul style="list-style-type: none"> • Storage: 72°F to 153°F (-50°C to 85°C) • Working: 36°F to 126°F (-40°C to 75°C)
Humidity	95% Maximum (Non-condensing)
Dimensions	176mm x 105mm x 25mm (not including antenna)
Weight	530g (not including the antenna) 590g (including the antenna) 990g (including all accessories)
Others	
Warranty	2 Year
Package Contents	<ul style="list-style-type: none"> • The H900 Series 3G wireless Router • CAT5 Ethernet Cable • DC12V1A Power Adapter • Antenna • CD-ROM with Product Documentation

Model	Marks	Optional
H900d	HSDPA Router, work under HSDPA/EDGE/GPRS/GSM networks	
H900u	HSUPA Router, work under HSUPA/HSDPA EDGE/GPRS/GSM networks	
H900ev	EVDO Router, work under EVDO/CDMA1x networks	

>>| Accessories

- The H900 Series 3G wireless Router
- CAT5 Ethernet Cable
- DC12V1A Power Adapter
- Antenna
- CD-ROM with Product Documentation



DB15 to DB9 Cable



DB9 serial cable



RJ45 to DB9 Cable



USB Cable



EU Power Supplier



US Power Supplier



AU Power Supplier



Desktop Power Supplier
EU, US, AU, UK for choice



UK Power Supplier



Metal Magnetic-Mount W/ Cable



Rubber antenna



Rubber Magnetic-Mount W/ Cable



CD-Rom with Manual/Data

Notes:
We packed the units with free accessories; default packed depends on stock and the device's feature

requirement. If you need specify the type, please inform us when you order.