

Wireless Modem Quick Start

Before software setup, please confirm the following:

1. Get a SIM card with HSDPA/HSUPA/EDGE/GPRS data business with balance available
2. Make sure the network signal is good enough
3. If there is firewall block the software installation, please help to pass though it

1. Modem Setup

Insert the SIM Card into the Modem's SIM Card Slot
Inset Modem into the Laptop or PC

2. Software Installation

After a few moments, the laptop or PC should automatically detect and install the Software.
(Notes: If the laptop or PC cannot auto-play, please double-click "My Computer", and then



double-click to install the software. Or right-click it to open it, then click "StartModem.exe" to install the software.

Be patient when installing, selecting according to the indications. This process should take a few minutes. When the Figure (1) pop-up screen, please click "Continue Anyway" to go on till "Finish".

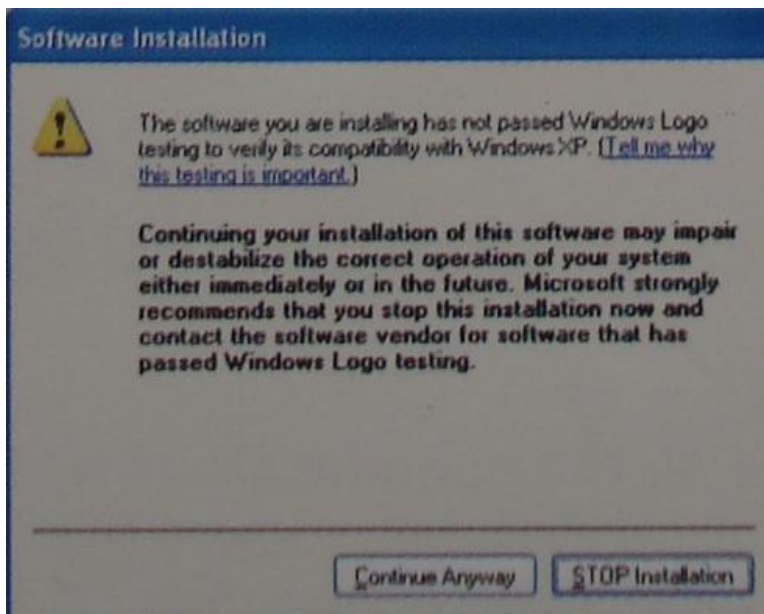


Figure (1)



A new icon will appear on the computer desktop after installation.

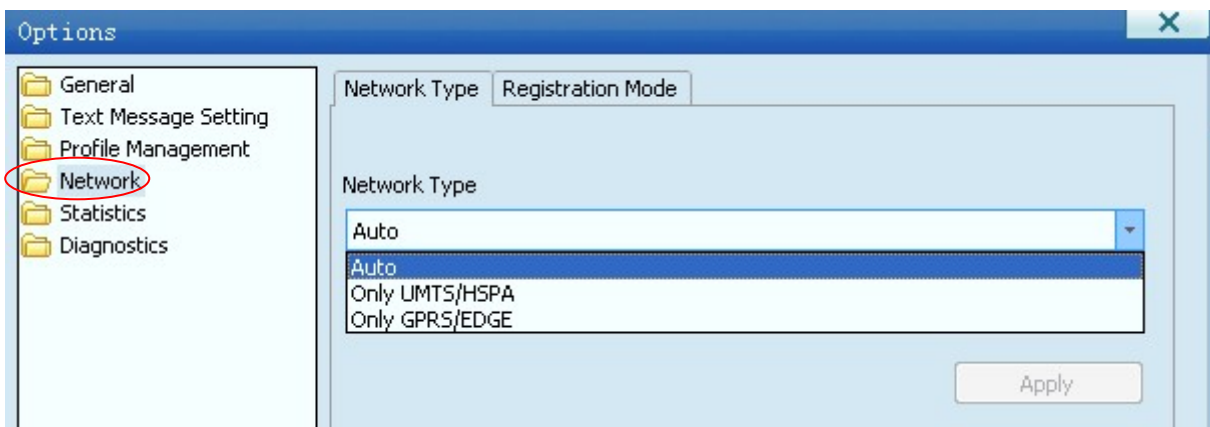
3. Internet Connection



Double-click on the icon and then click “Show Menu Button”, and select “Options”



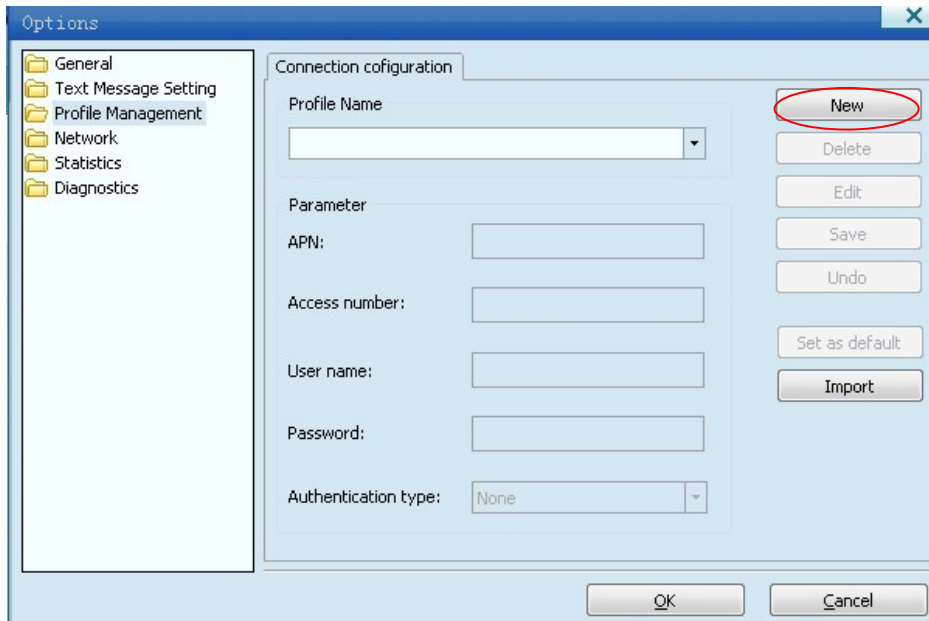
Select “Network”, and choose the correct network Type. Normally please select “Auto”, and click “Apply” button, and “OK” button to save. Then the modem will automatically search the networks and register on the networks.



Select “Connection Profile...”



Select the existed Profile Name or create a new while click “New” button.



For example of China Mobile GPRS networks.

Profile Name: please input as you want

APN: cmnet

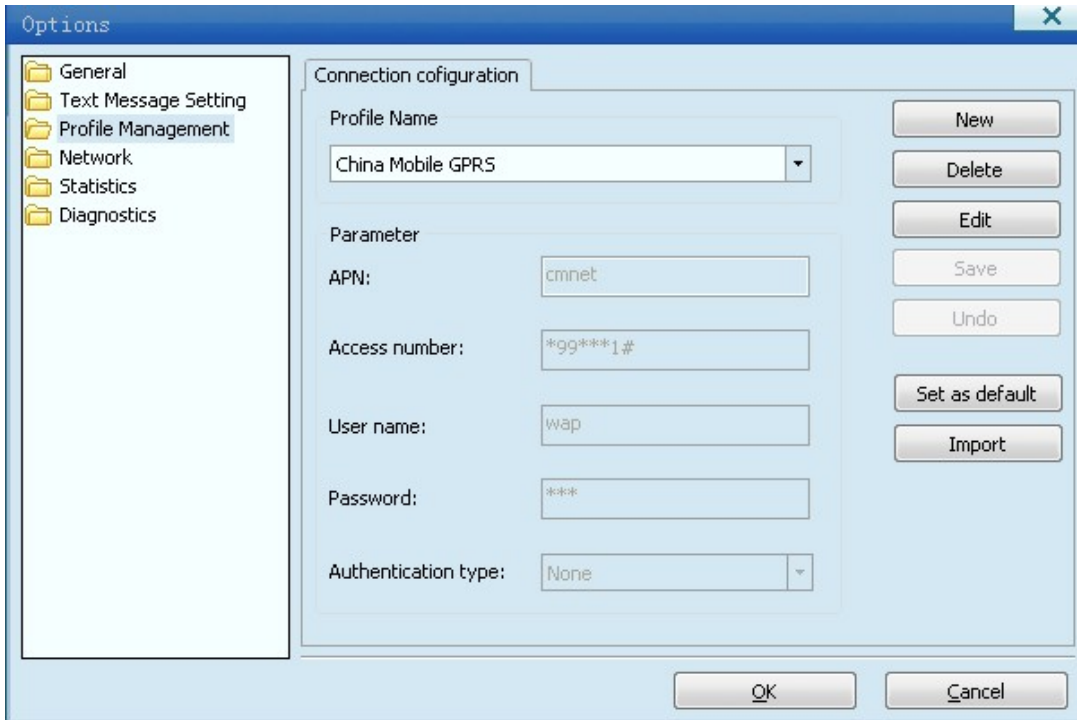
Access number: *99***1#

User name: wap

Password: wap

Authentication type: None

The parameters in red are from the sim card or network provider. Different network provider takes different value.



Save it after input. You can “Set as default”, then next time no need configuration.

Click “Connect” button to dialup to the internet. And click “Disconnect” button once you finish internet.

