

# Wireless Modem Quick Start

Before software setup, please confirm the following:

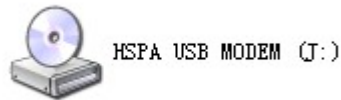
1. Get a SIM card with HSDPA/HSUPA/EDGE/GPRS data business with balance available
2. Make sure the network signal is good enough
3. If there is firewall block the software installation, please help to pass though it

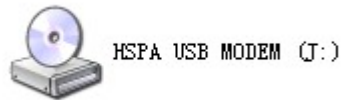
## 1. Modem Setup

Insert the SIM Card into the Modem's SIM Card Slot  
Inset Modem into the Laptop or PC

## 2. Software Installation


After a few moments, the laptop or PC should automatically detect and install the Software.  
(Notes: If the laptop or PC cannot auto-play, please double-click "My Computer", and then



double-click  to install the software. Or right-click it to open it, then click "setup.exe" to install the software.


Be patient when installing, selecting according to the indications. This process should take a few minutes. When the Figure (1) pop-up screen, please click "Continue Anyway" to go on till "Finish". If there is virus protected software prompt, please let it go to finish installation, otherwise the software cannot be installed successfully.

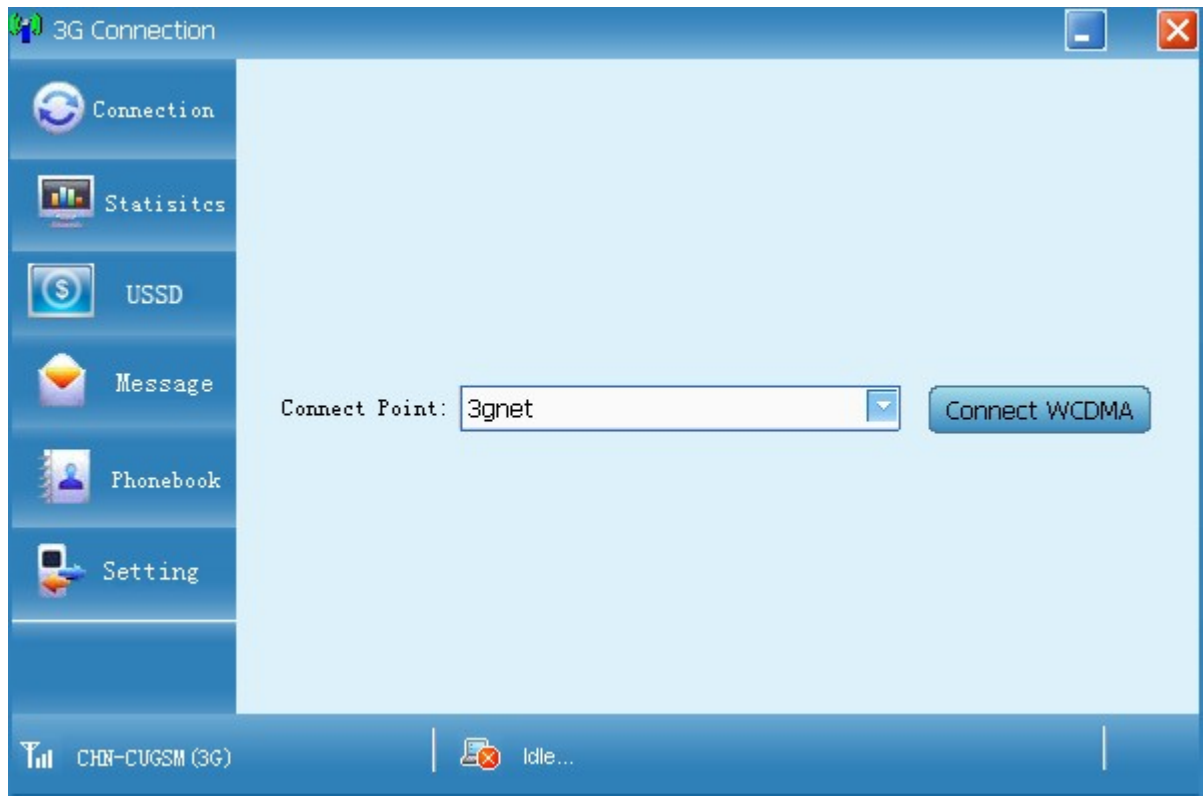


A new icon  will appear on the computer desktop after installation.

## 3. Internet Connection



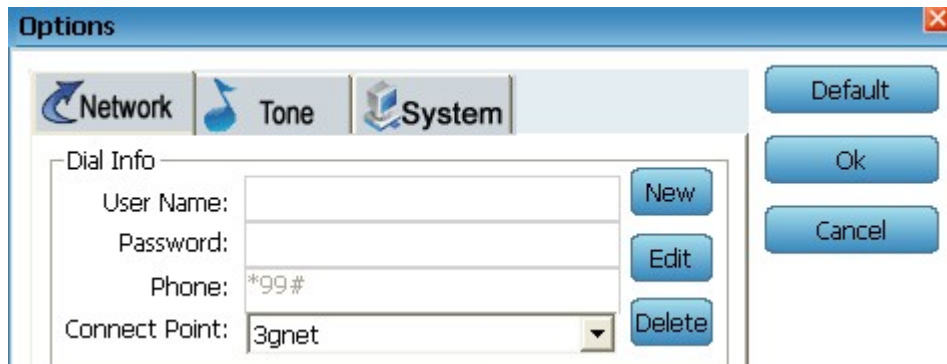
Double-click on the icon  to run the software.



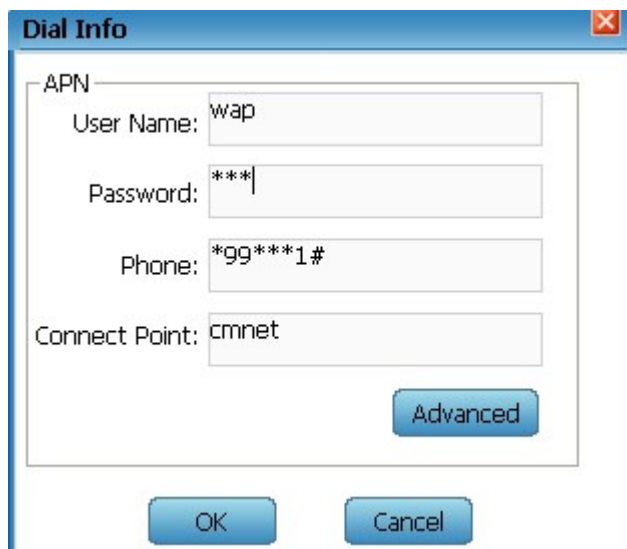
Click “Setting” button – “Network Type” – Select the right option.

1. GSM Only
2. WCDMA Only
3. GSM/WCDMA (if you don't know the network type exactly, choose this one)

Click “Setting” button – “Options”



Click “New” to create a dialing profile.



Fill in the parameters and lick “OK” button, which is confirmed by SIM Card/Network Carrier Provider.

For example of China Mobile GPRS networks.

Profile Name: please input as you want

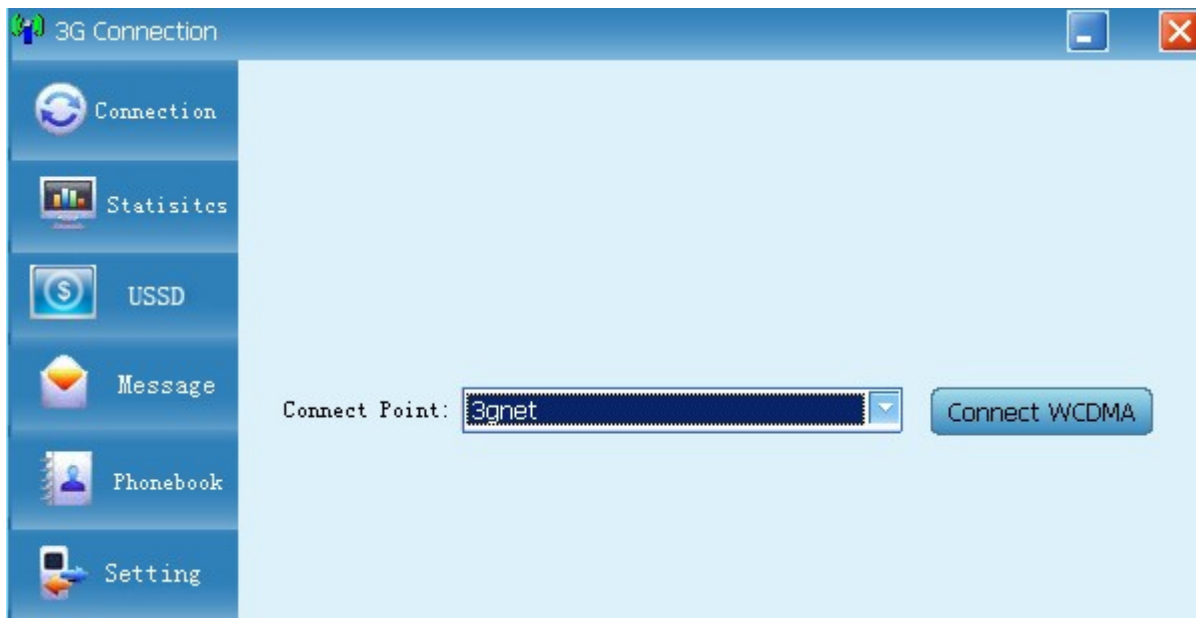
**APN(Connect Point): cmnet**

**Phone: \*99\*\*\*1#**

**User name: wap**

**Password: wap**

The parameters in red are from the sim card or network provider. Different network provider takes different value.



Click “Connect WCDMA” to dialup internet. After using the internet, please click “Disconnect WCDMA” button.